



PROVEN POWERTRAIN PERFORMANCE, TWO WAYS: DIRECT-FIT OR TUBE-MOUNT VENTS

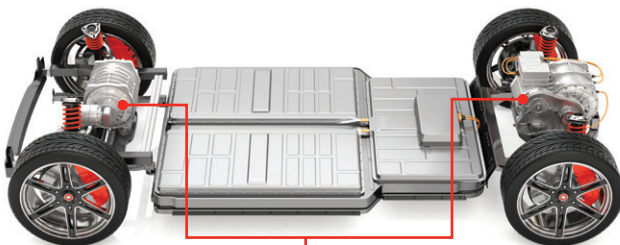
Choose Gore direct-fit or tube-mount vents: Both provide high performance and durable protection for electrified and traditional powertrain components

Venting for Protection

As packaging constraints push e-drivetrain components closer to the road surface, they are more vulnerable to extremes of weather, water, submersion or road contaminants that can threaten component reliability.

Now, GORE® Automotive Vents for powertrain offers two paths to high-performance venting and ingress protection: Traditional tube-mount vents (Part VE2048) and a new, more compact direct-fit mounting option (Part VE2148). Both can help you overcome the challenges inherent in designing, validating, and protecting electrified and traditional powertrain components.

Typical Applications



Traditional components:

- Transfer Case
- Power Transfer Unit
- Solid Beam
- Rear/Front Drive Module

E-Drivetrain:

- e-Axles
- Oil-Cooled e-Motor

Different Mounts. Same Benefits.

- **Improve component reliability**
The vents' GORE Membrane protects oil-cooled e-motors and other e-drivetrain components from damaging contaminants, while Gore's integrated Pre-filter protects the Membrane from internal oil aerosols that would quickly degrade an unprotected membrane.
- **Preserve seal integrity**
Even in extreme operating conditions, the breathable GORE Membrane rapidly equalizes pressures to avert stress on seals.
- **Meet global OEM standards**
Our vents' performance complies with OEM standards for water wading and fluid containment.
- **Streamline validation and reduce design cycles**
These waterproof vents can eliminate vent-related wading test "fails" and associated engineering redesign time.
- **Global support resources**
Every GORE® Automotive Vent is backed by our global network, materials technology expertise and application support.

About Gore's Direct-Fit Powertrain Vent (AVS 2148/VE2148)

- Compact, low-profile construction enables more design options, especially for space-constrained e-drivetrain and e-motor applications.
- Direct-fit (vent mounted directly into component housing) can streamline sourcing, supply and assembly efforts.
- Easy snap-fit integration to housing.

About Gore's Tube-Mount Powertrain Vent (AVS 41/VE2048)

- Tube-mount "distances" vent from potential exposure to high temperatures or lubricants.
- Tube format enables more flexibility in routing, especially for traditional powertrain components.
- Easy integration into existing applications; vent replacement, if required, is easy.

The same proven performance characteristics ... in two mounting styles



Product name (order number for samples)	AVS 2148 (Direct-Fit)	AVS 41 (Tube-Mount)
Order number (order number for series production)	VE2148	VE2048

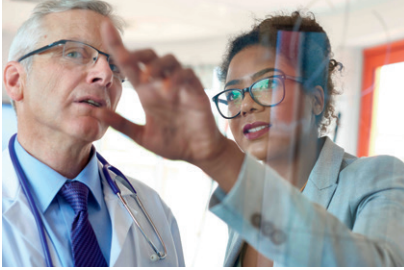
Product performance characteristics

Minimum airflow (per part) at 70 mbar (1 psi)	64 l/h	
Water Entry Pressure (assembly)	> 345 mbar (> 5.0 psi) for 60 seconds	
Ingress Protection (IP)	IPX9K*, IPX6K, IPX8, IP6X, IPX4	
Operating temperatures	-40 °C to +125 °C	
Membrane characteristic	Hydrophobic and oleophobic	

Materials of construction

Cap material	PA6.6 Impact modified	
Body material	PA6.6 – GF13	PA6.6 – GF33
Membrane type	GORE Membrane oleophobic ePTFE	
Pre-filter type	Sorbent	
Quad-ring (VE2148 only)	HNBR	N/A

*IPX9K Test Parameters: Pressure = 80 bar, Distance = 150 mm, Temp = 75 °C



A materials science company dedicated to transforming industries and improving lives

About Gore

W. L. Gore & Associates is a global materials science company dedicated to transforming industries and improving lives. Since 1958, Gore has solved complex technical challenges in demanding environments — from outer space to the world’s highest peaks to the inner workings of the human body. With more than 13,000 Associates and a strong, team-oriented culture, Gore generates annual revenues of \$4.8 billion.

Learn more at gore.com/autovents

FOR INDUSTRIAL USE ONLY. Not for use in food, drug, cosmetic or medical device manufacturing, processing, or packaging operations.

All technical information and advice given here are based on Gore’s previous experiences and/or test results. Gore gives this information to the best of its knowledge, but assumes no legal responsibility. Customers are asked to check the suitability and usability in the specific application, since the performance of the product can only be judged when all necessary operating data are available. The above information is subject to change and is not to be used for specification purposes. Gore’s terms and conditions of sale apply to the sale of the products by Gore.

W. L. Gore & Associates, Inc. is certified according to IATF 16949, ISO 9001 and ISO 14001 standards.

GORE, *Together, improving life* and designs are trademarks of W. L. Gore & Associates. © 2024 W. L. Gore & Associates, Inc.

INTERNATIONAL CONTACTS

Australia +61 2 9473 6800

China +86 21 5172 8299

EMEA +49 89 4612 2211

India +91 22 6768 7000

Japan +81 3 6746 2570

Korea +82 2 393 3411

Mexico +52 81 8288 1281

Singapore +65 6733 2882

South America +55 11 5502 7800

Taiwan +886 2 2173 7799

USA +1 410 506 7812

W. L. Gore & Associates, Inc.

401 Airport Road, Elkton, MD 21922

T +1 800 523 4673 F +1 410 506 8749 E automotive.us@wlgore.com

gore.com/autovents

